

Monthly Cleaning

OD 100, B 250-1 R01



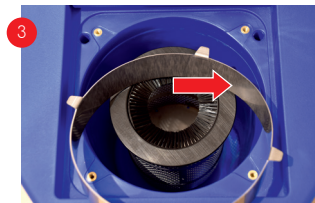
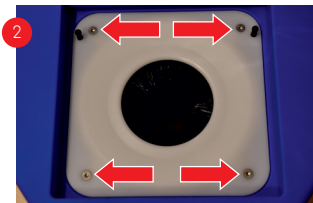
⚠ WARNING During any maintenance and cleaning routines, the SuitSpin should be isolated from its power supply.

⚠ CAUTION Never pour water inside the device – this can result in insufficient drainage within the device which can damage the motor.

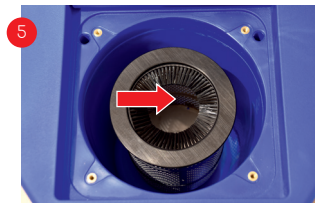
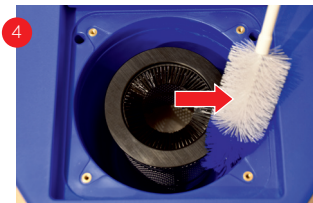
Monthly cleaning is recommended in places with chlorinated water and with less than 200 customers per dryer per day. In cases that the water is more aggressive (iron, sulfur, salt) or with more customers per day, it is recommended that the frequency of the cleaning regime is increased.

Isolate the power supply.

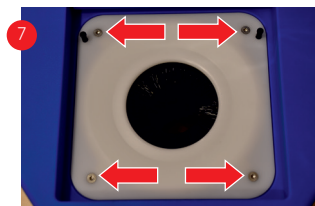
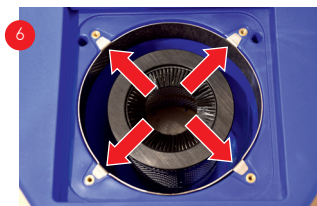
1. **Clean the outside cover and plastic parts** using a soft cloth. Use lukewarm water with mild detergent, or products especially suited for the cleaning of stainless-steel, plastic or painted surfaces. Plastic parts must not be cleaned with products that contain alcohol or that are flammable or abrasive.
2. Unscrew the 4 screws in the white plastic plate using the supplied screwdriver, keep the screws. Remove the plate, check that the springs are attached to the black plastic tube and that they are intact. Clean the white plate using a disinfectant and a soft cloth.
3. Remove the stainless-steel band and clean it using disinfectant and a soft cloth.



4. Check the space between the inner and outer drum and make sure that there are no foreign objects present – if so, remove. Make sure that the hose connection outlet at the bottom of the outer drum is not clogged. In case of a blockage, clean it thoroughly. Spray the space between the drums using disinfectant and let it work. Then clean the space thoroughly using the supplied bottle brush.
5. Make sure that there are no foreign objects present inside the inner drum – if so, remove. Spray the inner drum using disinfectant and let it work. Then clean the drum thoroughly using a soft cloth. Make sure that the bristle ring is properly fixed on the top of the inner drum and intact. In the event of damage, contact your supplier and order a replacement.

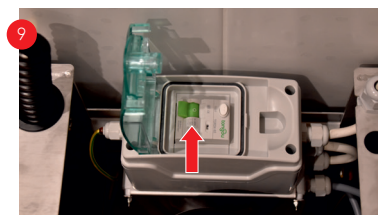
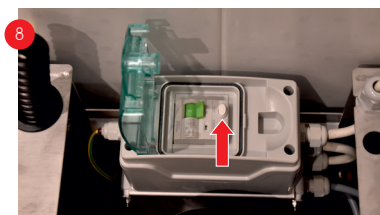


6. Put the stainless-steel band back inside the outer drum and make sure that the 4 bent parts are facing the brass nuts (as seen in the picture over).
7. Install back the white plastic plate by screwing in the 4 previously removed screws, make sure that the springs fit inside the 2 holes. Test that the springs are strong enough to open and hold the lid.



After cleaning reestablish the power supply.

8. On the underside of the dryer locate the junction box with RCD. Open the plastic door and press the "TEST" button.
9. The RCD's switch must move to the "OFF" position. Move the switch back to the "ON" position to resume normal function. If the switch does not move to the "OFF" position during testing or is unable to be moved back to the "ON" position, the RCD may be faulty. Please contact your Suitspin supplier.



10. Insert a wet swimsuit/cloth inside the drum and let the cycle run. This will remove the remaining disinfectant. At the same time check that the extracted water exits freely through the waste hose and that it is clear. If not, the waste hose must be cleaned or replaced with a new one (see below).
11. Make sure that the engine stops immediately (in less than 1 second) when the cycle is complete or anytime when the lid is opened. If the engine takes longer to stop, contact your supplier as your brake might need adjustment or be worn.

REMOVING/CLEANING/REPLACING THE DRAIN HOSE:

Isolate the power supply.

The drain hose is connected to the outer drum waste port on the underside of the machine. Unfasten the jubilee clip which holds the hose to the port and slide off the hose. The hose can then be cleaned with the supplied bottle brush. Re-fix the hose, using the same jubilee clip, back onto the drain port.

Reestablish the power supply and test the unit.