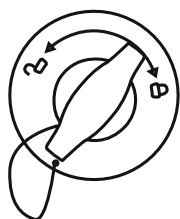
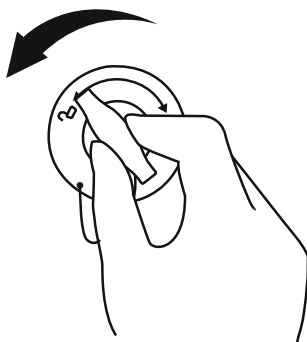


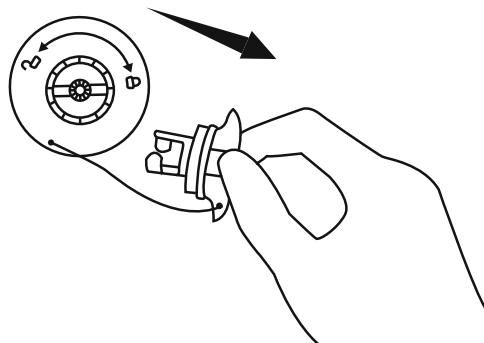
**WARNING:** Be sure not to exceed the max pressure of 15 PSI (1bar). In the case of over-inflation, the inflatable chamber and the air valve of the SUP could explode and cause injury to the users.



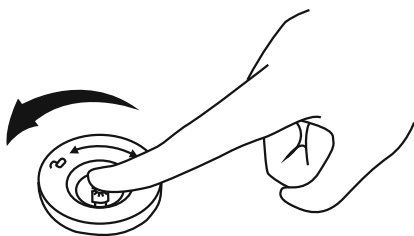
①



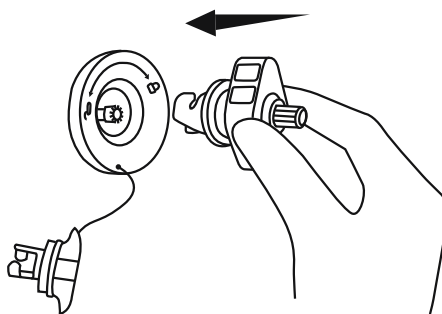
②



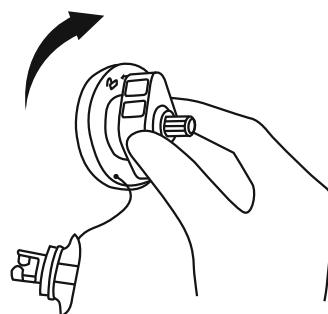
③



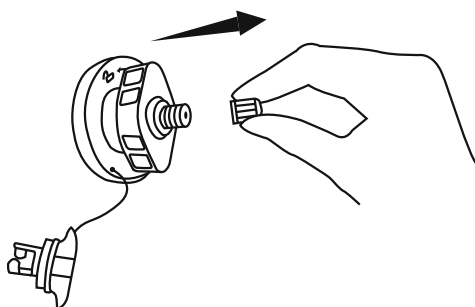
④



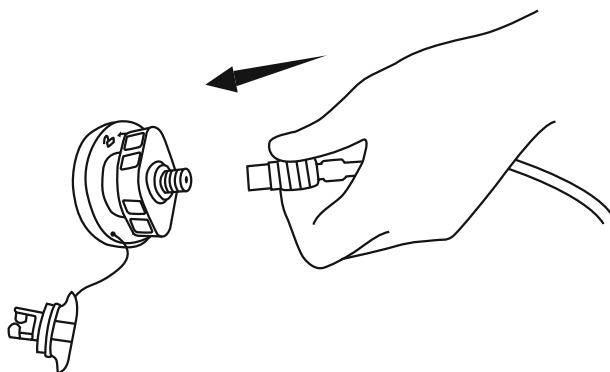
⑤



⑥



⑦



⑧

# Warning

## IMPORTANT SAFETY INSTRUCTIONS

Read the manual and follow the instructions relating to safety tips, correct and complete product assembly, setting into service, use and maintenance. For your own safety, always heed the advice and warnings in these instructions. Non-compliance with these operating instructions may expose you to serious danger or death. Only use the product in the places and conditions for which it is intended.

Stand-up Paddling is a dangerous sport. Use of this product exposes the user to unexpected risks, dangers and hazards.

User should realize and understand these risks. The use of this product implies the respect of the safety instructions described in the manual.

Regardless of the number of persons on board, the total weight of persons and equipment must never exceed the maximum recommended load.

Do not use this product if you are under the influence of alcohol, drugs or medications.

Life saving devices such as life jackets and buoys should be pre-inspected and used at all times. Always paddle with an experienced partner when using this product.

Tell your sail routes and time schedule to your partner.

Check the weather forecast first to know the marine environment and weather conditions before starting. Bad weather and marine environment is very dangerous. Never use this product in conditions that are beyond your ability (such as, but not limited to, high surf, riptides, currents or river rapids)

Use the product near the shore and beware of natural factors such as wind, tidewaters and tidal waves. **BE AWARE OF OFFSHORE WINDS AND CURRENTS.**

Before every use, carefully inspect the product for signs of wear or leakage to ensure everything is in good condition. Please do not use the SUP if you find any damage.

Do not surf in unfamiliar water areas.

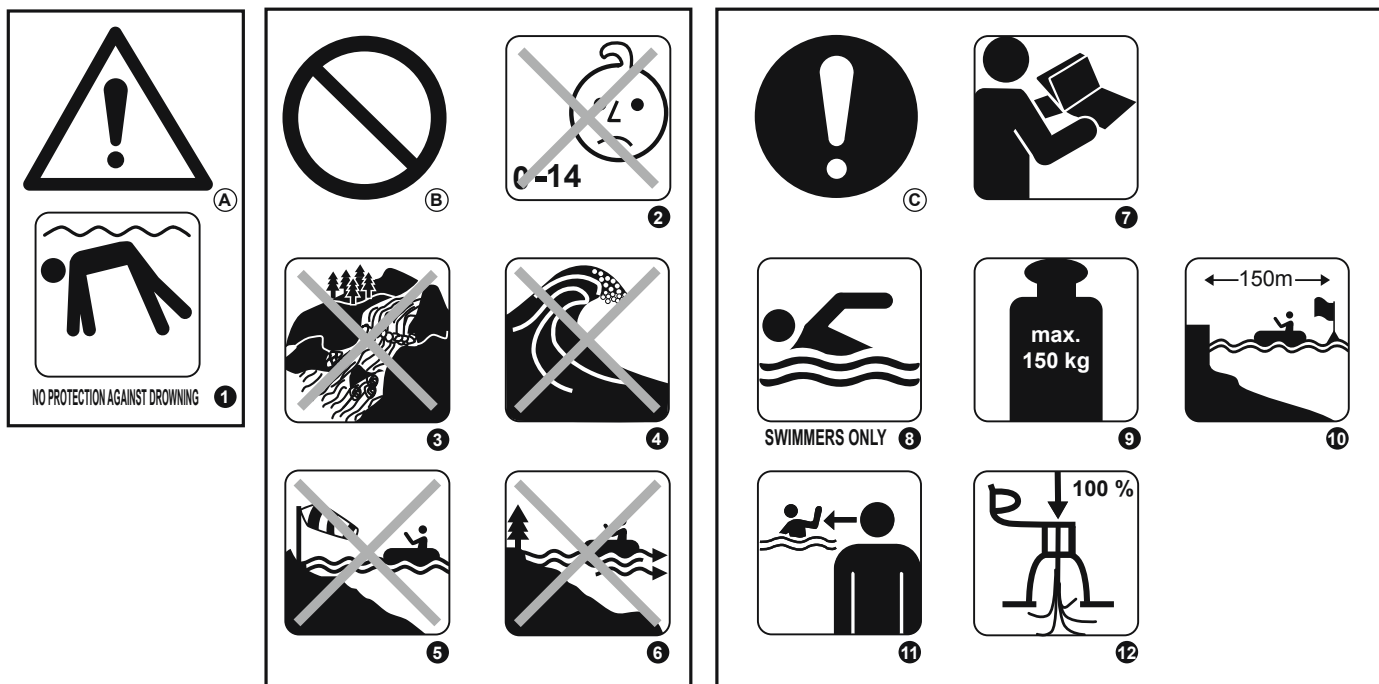
Beware of potential harmful effects of liquids such as battery acid, oil and petrol. These liquids may damage the product. Inflate according to the rated pressure on the product or it will cause over inflation and/or an explosion.

Stay balanced. Uneven distribution of loads on the board may cause the board to overturn which could lead to drowning.

Know how to operate this product. Check your local area for information and/or training as needed.

Inform yourself about local regulations and dangers related to surfing, boating and/or other water activities.

## SAVE THESE INSTRUCTIONS



(A) WARNING

(B) PROHIBITION

(C) MANDATORY

1 NO PROTECTION AGAINST DROWNING

2 NOT FOR CHILDREN 14 YEARS OF AGE AND BELOW; APPLY ONLY TO CHILDREN ABOVE 14 YEARS OF AGE

3 DO NOT USE IN WHITE WATER

4 DO NOT USE IN BRAKING WAVES

5 DO NOT USE IN OFFSHORE WIND

6 DO NOT USE IN OFFSHORE CURRENT

7 READ INSTRUCTIONS FIRST

8 SWIMMERS ONLY



9 MAXIMUM LOAD CAPACITY 65363E: 150KG

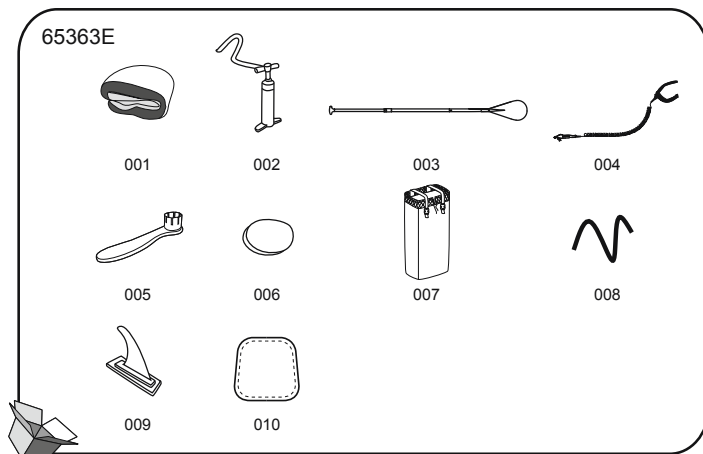
10 SAFE DISTANCE TO SHORE 150 M

11 ALWAYS SUPERVISE CHILDREN IN WATER

12 FULLY INFLATE ALL AIR CHAMBERS

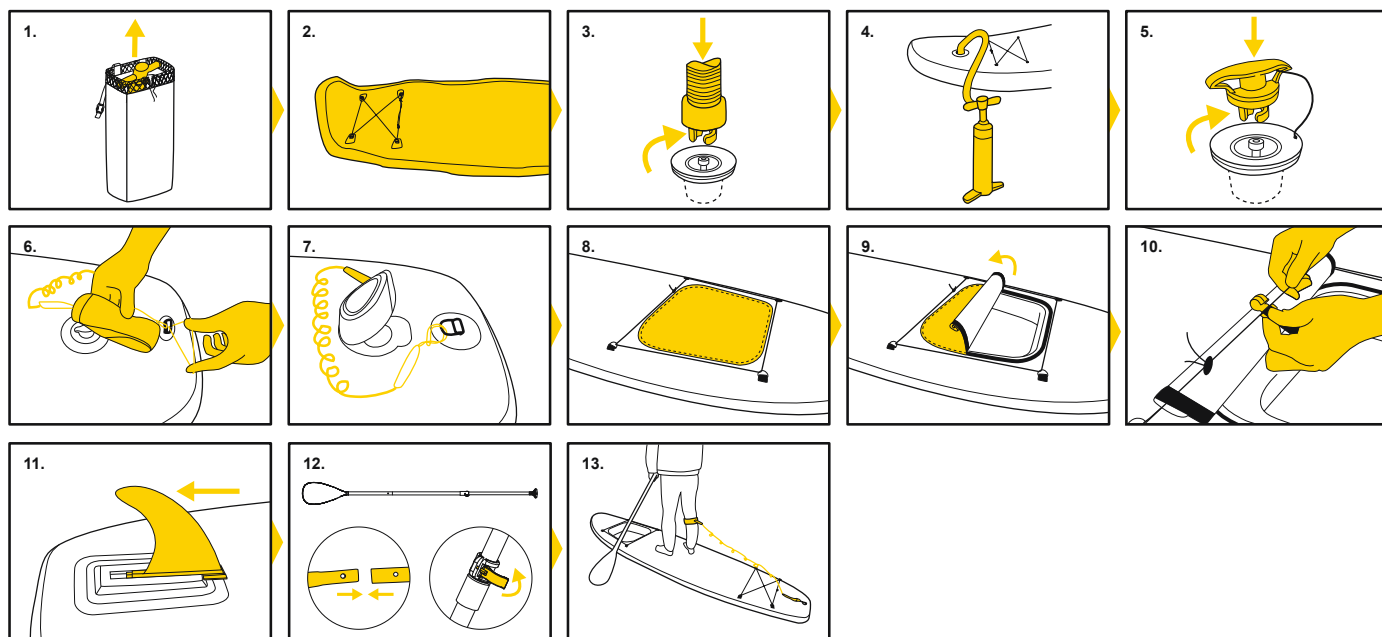
## Technical Specifications

Item	Inflated Size	Recommended Working pressure	Maximum Load Capacity
65363E	11ft.2in. x 35in. x 6in. (3.40m x 89cm x 15cm)	1.03bar (15psi) 	330lbs (150kg) 



Part No.	Description	QTY
001	Paddle Board	1
002	Hand Pump	1
003	Paddle	1
004	Leash	1
005	Wrench	1
006	Polyester 3-ply patch	1
007	Backpack	1
008	Elastic Cord	2
009	Fin	1
010	Window Cover	1

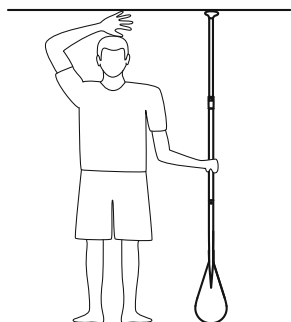
## Installation of the SUP



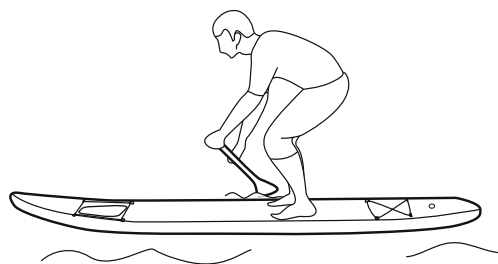
**NOTE:** The air pressure gauge of the hand pump only shows the air pressure higher than 5 psi, which is normal. When the air pressure in the product is lower than 5 psi, the air pressure gauge will not show a value.

## Usage of the SUP

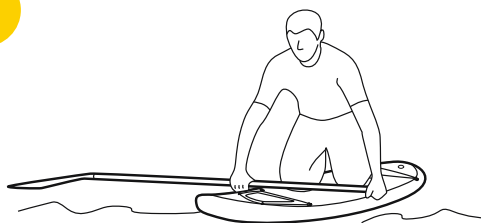
1



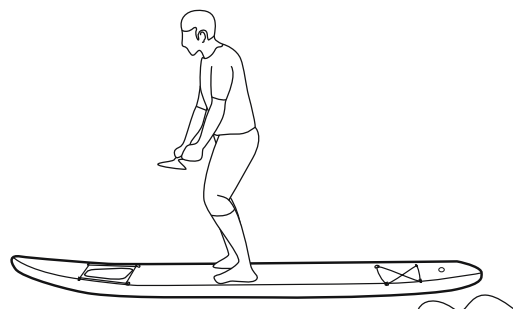
5



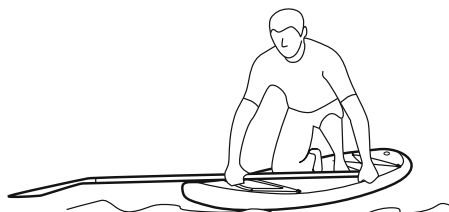
2



6



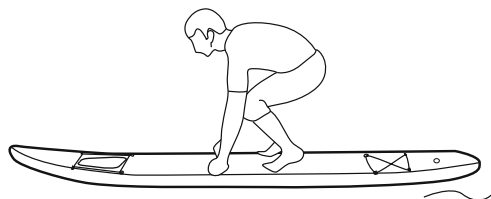
3



7



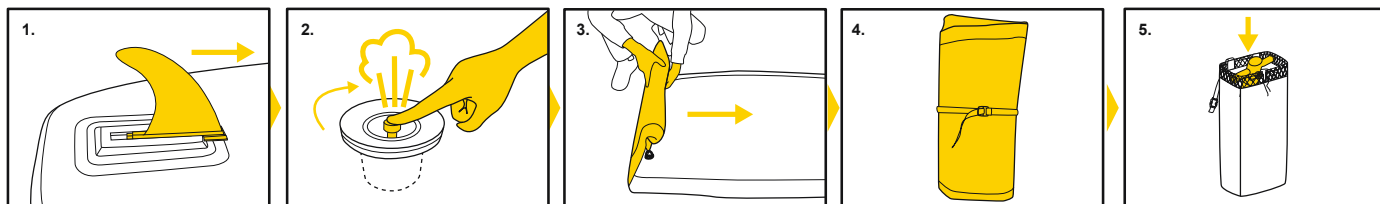
4



Extended exposure to sun can shorten the lifespan of your SUP.  
We suggest not leaving SUPs in direct sunlight for more than 1 hour after use.

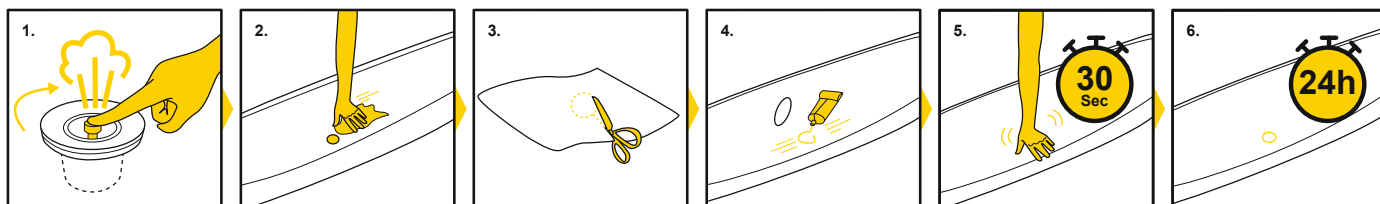


## Maintenance and storage of the SUP



Store in a cool, dry place and out of children's reach. Do not unfold this product when the temperature is low. The product should be room temperature (over 20°C) for 24 hours before inflation.

## Repair





©2021 Bestway Inflatables & Material Corp.

All rights reserved/Tous droits réservés/Todos los derechos reservados/Alle Rechte vorbehalten/Tutti i diritti riservati

Trademarks used in some countries under license from/

Marques utilisées dans certains pays sous la licence de/

Marcas comerciales utilizadas en algunos países bajo la licencia de/

Die Warenzeichen werden in einigen Ländern verwendet unter Lizenz der/

Marchi utilizzati in alcuni paesi concessi in licenza a

**Bestway Inflatables & Material Corp., Shanghai, China**

Manufactured, distributed and represented in the European Union by/

Fabriqués, distribués et représentés dans l'Union Européenne par/Fabricado, distribuido y representado en la Unión Europea por/

Hergestellt, vertrieben und in der Europäischen Union vertreten von/Prodotto, distribuito e rappresentato nell'Unione Europea da

**Bestway (Europe) S.r.l., Via Resistenza, 5, 20098 San Giuliano Milanese (Milano), Italy**

Distributed in Latin America by/Distribué en Amérique latine par/Distribuido en Latinoamérica por/Distribuído na América Latina por

**Bestway Central & South America Ltda, Salar Ascotan 1282, Parque Enea, Pudahuel, Santiago, Chile**

Distributed in Australia & New Zealand by **Bestway Australia Pty Ltd, Unit 2/98-104 Carnarvon St Silverwater, NSW 2128, Australia**

Tel: Australia: (+61) 29 0371 388; New Zealand: 0800 142 101

Distributed in United Kingdom by **Bestway Corp UK Ltd, 8 Wentworth Road, Heathfield Industrial Estate, Newton Abbot, Devon, TQ12 6TL**

Exported by/Exporté par/Exportado por/Exportiert von/Esportato da

**Bestway (Hong Kong) International Ltd./Bestway Enterprise Company Limited**

**Suite 713, 7/Floor, East Wing, Tsim Sha Tsui Centre, 66 Mody Road, Kowloon, Hong Kong**

Tel: +86 21 69135588 (For U.S. and Canada)

**www.bestwaycorp.com**